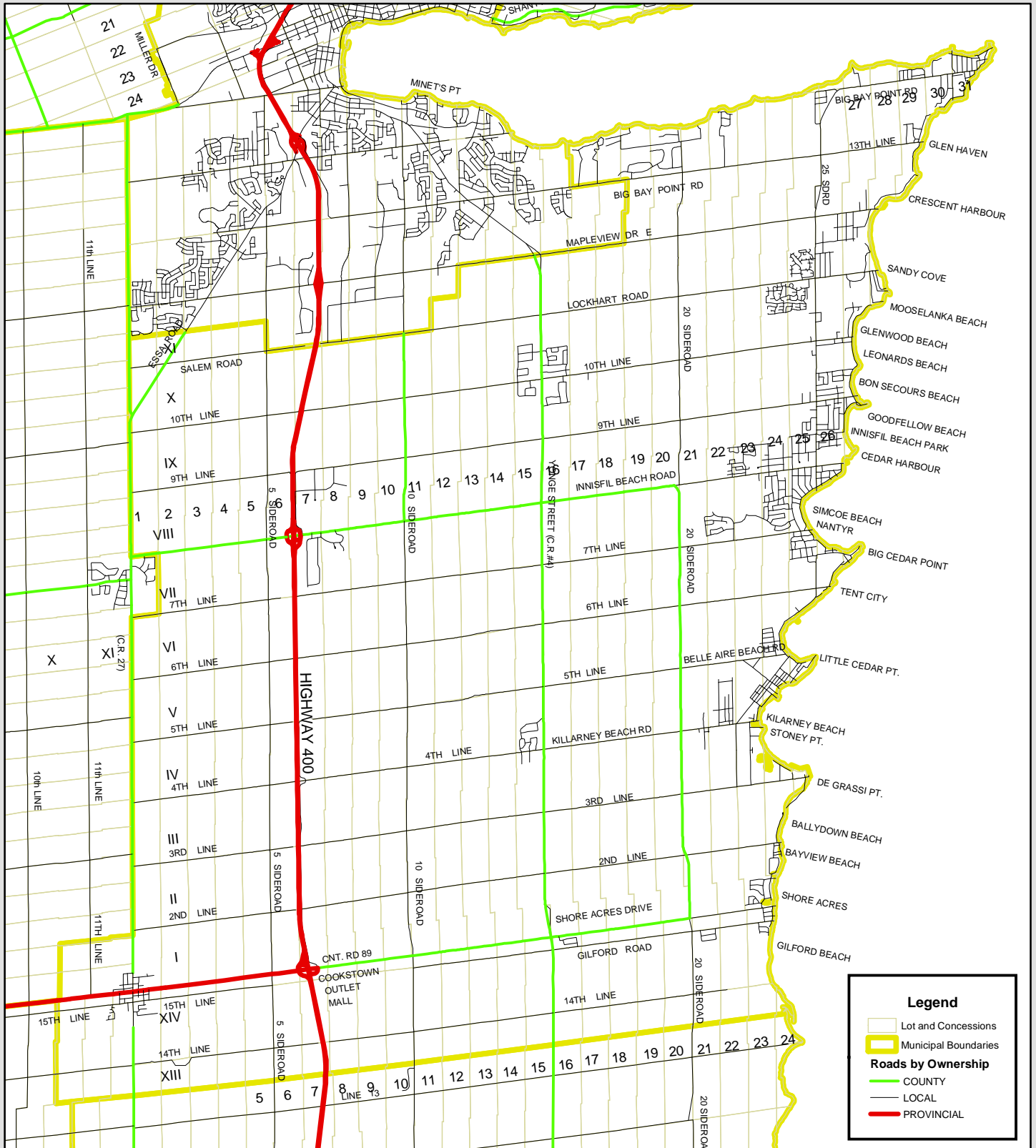


Town of Innisfil



Scale: 1:120,000

0 1 2



Kilometers

Created: June 2002
 County of Simcoe
 GIS Department
 705-726-9300



This map, either in whole or in part, may not be reproduced without the written authority from the County of Simcoe.
 Copyright County of Simcoe
 Land Information Network Cooperative © LINC 2002
 Produced (in part) under licence from the Cities of Barrie & Orillia and the Ontario Ministry of Natural Resources.
 Copyright © Queens Printer 2002
 This map is not a legal survey. For more information call (705) 726-9300 or visit www.county.simcoe.on.ca